

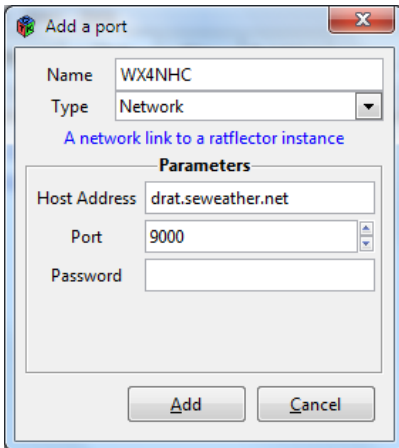
D-Rats Weather Net Set Up To Send A Form Message

(07/27/2015)

Open File, Preference (Alt-P)

Click RADIO tab

Click ADD button to Add A Port; No password is used



Add a port

Name: WX4NHC

Type: Network

[A network link to a reflector instance](#)

Parameters

Host Address: drat.seweather.net

Port: 9000

Password:

Add Cancel

Click Add button.

Select/Check the WX4NHC SE Weather Net, uncheck the others.

Note: Run only one reflector at a time to avoid confusion.

Now you can send your weather report using the message form NHC_Net_Report.xml

BUT FIRST,

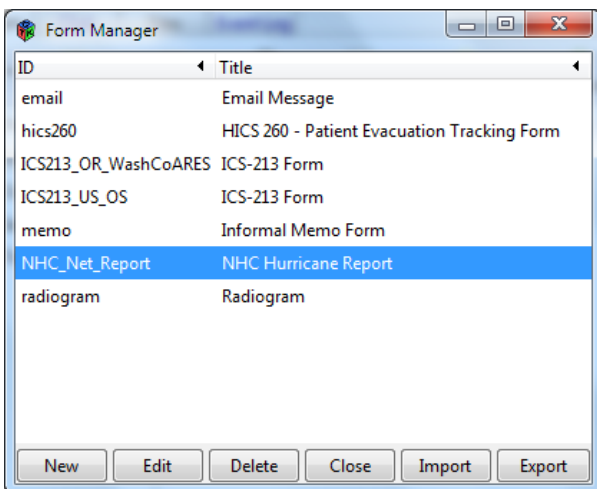
Copy the code on the following pages into a text editor, save the file as NHC_Net_Report.xml

Note: Remember where you save it on your hard drive.

Now, back in D-Rats: Click on File, Message Templates to open the Form Manager

Click IMPORT

Browse to then Select the NHC_Net_Report.xml file, Click OPEN, Verify it shows in the list.



Form Manager

ID	Title
email	Email Message
hics260	HICS 260 - Patient Evacuation Tracking Form
ICS213_OR_WashCoARES	ICS-213 Form
ICS213_US_OS	ICS-213 Form
memo	Informal Memo Form
NHC_Net_Report	NHC Hurricane Report
radiogram	Radiogram

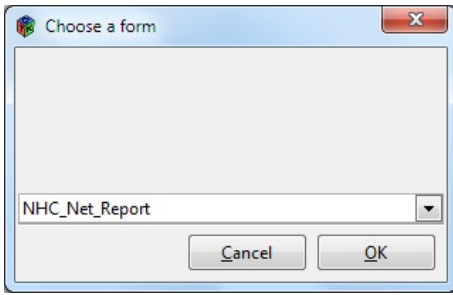
New Edit Delete Close Import Export

Press CLOSE

Exit from D-Rats, reopen D-Rats

Click on MESSAGES tab, Click on NEW button to open Choose A Form

Select the NHC_Net_Report form from the dropdown, Click OK

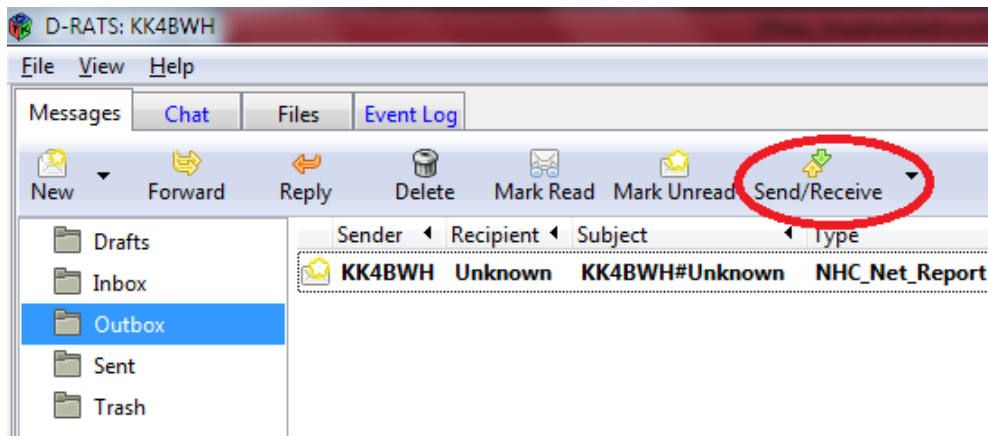


Fill in the report as accurately as possible

NHC Hurricane Report	
Routing Information	
Source Callsign	KK4BWH
Destination Callsign	NHC
Hurricane	Hurricane Net Test
Reporting Station Callsign	KK4BWH
City, State	Dallas, GA
Your Latitude and Longitude	33.924, -84.841
Observation Date	Jul 27, 2015
Observation Time	20:53:31
Time Zone	Local
Wind Speed	0
Units	MPH
Measurement	Estimated
Wind Gust	0
Wind Direction	
Barometric Pressure	
Units	Inches
Operator Name	
Comments	
Attachments	
Name	Size (bytes)
Path	

When finished, Press SEND at the top of the window.

Then press Send/Receive.



CODE

Copy the following code, unedited, into a text editor, save the file as NHC_Net_Report.xml

Note: Remember where you save it on your hard drive.

```
<xml>
<form id='NHC_Net_Report'>
<title>NHC Hurricane Report</title>
<field id='hurricane'>
<caption>Hurricane</caption>
<entry type='text'/>
</field>
<field id='callsign'>
<caption>Reporting Station Callsign</caption>
<entry type='text'/>
</field>
<field id='location'>
<caption>City, State</caption>
<entry type='text'/>
</field>
<field id='_auto_position'>
<caption>Your Latitude and Longitude</caption>
<entry type='text'/>
</field>
<field id='date'>
<caption>Observation Date</caption>
<entry type='date'/>
</field>
<field id='time'>
<caption>Observation Time</caption>
<entry type='time'/>
</field>
<field id='time_zone'>
<caption>Time Zone</caption>
<entry type='choice'><choice set='y'>Local</choice><choice>GMT</choice></entry>
</field>
<field id='wind'>
<caption>Wind Speed</caption>
```

<entry type='numeric'>0</entry>
</field>
<field id='wind_units'>
<caption>Units</caption>
<entry type='choice'><choice set='y'>MPH</choice><choice>Knots</choice></entry>
</field>
<field id='wind_meas'>
<caption>Measurement</caption>
<entry type='choice'><choice set='y'>Estimated</choice><choice>Measured</choice></entry>
</field>
<field id='wind_gust'>
<caption>Wind Gust</caption>
<entry type='numeric'>0</entry>
</field>
<field id='wind_dir'>
<caption>Wind Direction</caption>
<entry type='text' />
</field>
<field id='press'>
<caption>Barometric Pressure</caption>
<entry type='text' />
</field>
<field id='press_units'>
<caption>Units</caption>
<entry type='choice'><choice set='y'>Inches</choice><choice>Millibars</choice></entry>
</field>
<field id='op'>
<caption>Operator Name</caption>
<entry type='text' />
</field>
<field id='comments'>
<caption>Comments</caption>
<entry type='multiline' />
</field>
</form>
</xml>

<!-- neodl2.grp.bf1.yahoo.com Fri May 29 00:08:54 PST 2015 -->
<!-- origin1.grp.bf1.yahoo.com Thu May 28 17:35:15 PDT 2015 -->
<!-- origin1.grp.bf1.yahoo.com Thu May 28 17:35:15 PDT 2015 -->