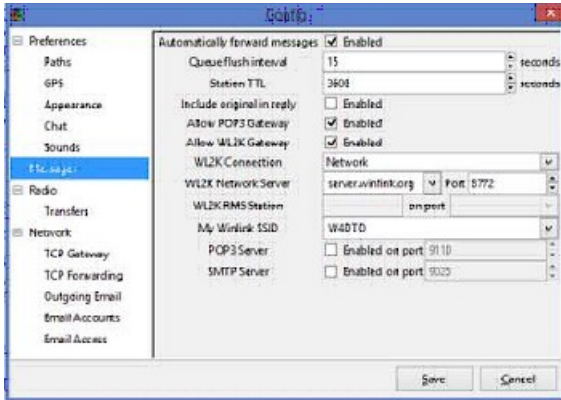


How to send a D-Rats message to Winklink2000

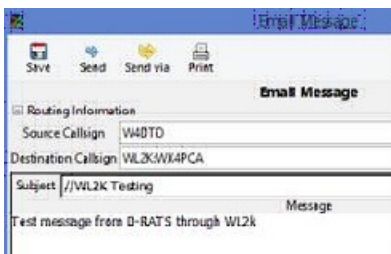
last update: 05302015

How to send messages to Winlink2000 through D-RATS. If you don't know about Winlink 2000 check it out at www.winlink.org. Another great tool for our toolbox.

If you are registered on WL2K (see www.winlink.org) configure D-RATS for WL2k as follows...



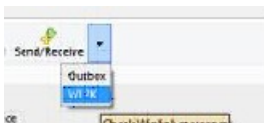
You can then send WL2k messages from D-RATS as follows.



The Destination Callsign field should start with "WL2K:" to direct the email to Winlink 2000, and it should include either a WL2k registered address ("WX4PCA in this example") or a regular email address.

Press Send to send them message.

Then, from the main D-RATS screen click Send/Receive and select WL2K.



You can also use Send/Receive and WL2K to check for your WL2k messages.